



## Above All Knowledge Pack for SAP

- Code-free access to SAP business services
- Ideal for cross system integration
- Ready for composite application assembly

### *High Quality Business Services*

The Above All Knowledge Pack for SAP® software provides the high quality business services you need to more effectively and productively integrate with SAP. The Above All Knowledge Pack for SAP mines services—published BAPIs and custom ZBAPIs and SAP Business Object Repository metadata. From the information mined, the Knowledge Pack creates a set of business services specific to each SAP business object type (i.e. customer, sales order...). Incorporated into this object model are:

- All data elements associated with the BAPIs and ZBAPIs that were mined
- Data element attributes such as data types, user interface field names and pick list values derived from the SAP Business Object Repository
- Operations available from BAPIs and ZBAPIs for each SAP business object type
- Seamless, integrated authentication management

### *Improve Cross System Integration*

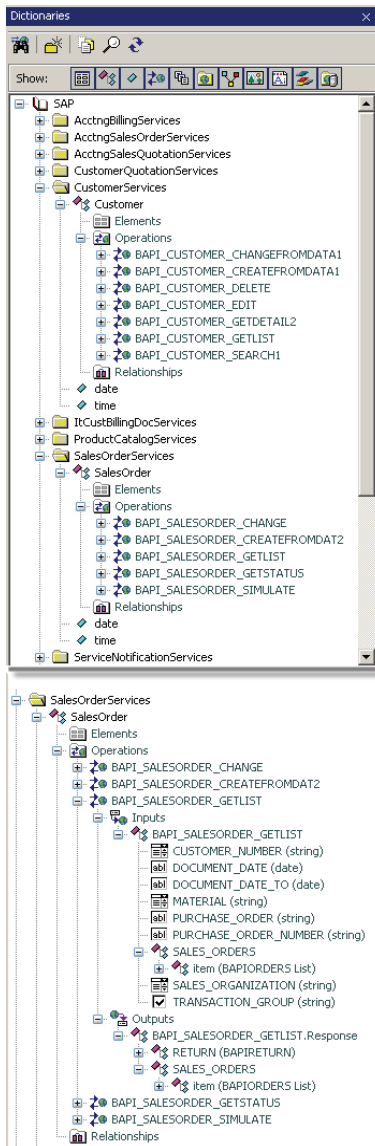
Knowledge Packs facilitate your integration of SAP solutions with other systems. Just as the Above All Knowledge Pack for SAP provides a set of well-formed business services for SAP, Knowledge Packs for other systems such as customer relationship management, case management, etc. do the same for their systems. These services, formulated consistently across systems and defined in business terms, are essential for semantic resolution. They provide the contextual and conceptual basis for understanding the system and more importantly the interrelationships between systems. Abstracted to the business level, they come ready for integration.

### *Accelerate Application Composition*

Knowledge Packs enable the rapid assembly of composite applications using Above All's four step methodology. The powerful combination of enhanced business services delivered by the Above All Knowledge Pack for SAP and relationships visually developed in Above All Studio eliminate much of the hand-coding normally created to join services together. Automated user interface generation relies on the strong typing, associated user interface controls, and automatically created user interface components created by the Above All Knowledge Pack for SAP. Of course, both the user interface component definitions and the generated composite applications are editable in Above All Studio.

### *Raise Integration to a Higher Level*

The Above All Mine, Refine, Assemble, and Deploy approach enables the fast creation of flexible composite applications. Developers using Above All Knowledge Packs work at a higher level than with hand-coding approaches. They focus on the semantic adaptation of the systems being integrated. They visually refine basic services provided by the Knowledge Packs into the custom, integrated services needed by the business. Above All Studio automatically generates composite applications from assemblies of these optimal services. Developers can revise the generated user interface to comply with corporate standards and to customize it for maximum effectiveness. Deployment of the composite application is as simple as selecting the appropriate client and pushing a button



Sample SAP Repository with Sales Order detail created with the Above All Knowledge Pack for SAP

The Above All approach starting with the Above All Knowledge Pack for SAP increases developer productivity over 300% from hand-coding approaches like ABAP, Java, or .NET. More importantly, the Above All capabilities allow the developer to focus on what is important—delivering integration that makes the end user more productive.

### Summary of Above All Knowledge Pack for SAP Features

- Delivers code-free access to BAPIs and ZBAPIs for integration
- Provides functional and object-centric views of BAPIs for mining
- Mines both published BAPI and custom ZBAPI services
- Organizes mined structures and operations by SAP business object type
- Incorporates meta data from the SAP Business Object Repository to add detail to data elements
  - Strongly types data elements
  - Specifies user interface field labels
  - Sets up automatic pick lists for appropriate data elements
- Automatically defines user interface appearance and behavior properties for data elements
- Automates data conversions from internal to external format and vice versa using conversion exits
- Allows simplification of operation signatures through specification of input-only and output-only parameters
- Manages the setting of update flags for changed data element values in update operations
- Converts error structures into standard exception
- Sets up authentication properties for seamless login
- Automatically monitors, manages, and preserves sessions to prevent repeated logins

### Jump Start Your Start Your SAP Integration

With the Above All Knowledge Pack for SAP, you have a more productive alternative to coding to integrate your SAP application(s). Knowledge Pack objects and operations are designed to deliver immediate, code-free productivity. Make the Above All Knowledge Pack for SAP the starting point for your SAP integration.

#### System Requirements (additional details available on [www.aboveallsoftware.com](http://www.aboveallsoftware.com)):

**Operating Systems:** Microsoft Windows XP Family, Microsoft Windows Server 2003 Family.

**Required Software:** .NET Framework 1.1 Redistributable.

**Processor:** 800 MHz or faster; **RAM:** 1 GB; **Hard disk space:** 40 MB.

For more information about how Above All Software can help you solve your integration puzzle, please call us, visit our Web site, or email us.

One Lagoon Drive, Suite #110 • Redwood City, CA 94065  
Tel: +1.650.232.2900 • +1.800.819.5530 • Fax: +1.650.232.2901  
[info@aboveallsoftware.com](mailto:info@aboveallsoftware.com) • [www.aboveallsoftware.com](http://www.aboveallsoftware.com)